

# FLOATEX<sup>®</sup>

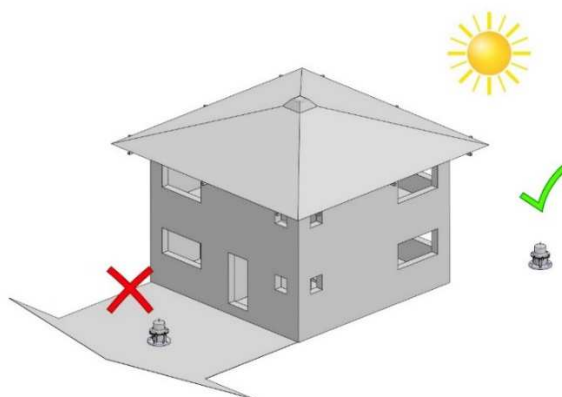


120SECIII

## INSTALLATION

It is important that exposure to direct sunlight is guaranteed throughout the year to allow the lantern to function optimally.

Shading drastically reduces the battery charging performance.



## FUNCTIONING

During daytime, solar panels recharge the batteries through the control card. Battery's accumulation capacity grants the marine lantern to work for a certain amount of days.

This factor depends on the parameters selected.

The energy that has been collected over the daytime is used during the night to provide power-supply to the LED light.

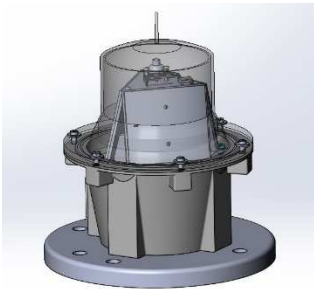
The change between day/night – night/day mode shall remain for few minutes to avoid false switch on/off.

The light placed under the sun recharges the batteries even if the magnet is still on place (light off); This action is confirmed by the switch on of the small green light inside the lantern. This feature is useful to recharge the lanterns kept in storage for long periods avoiding their complete switch-on. In this specific case, during the charging phase, the light may emit small flashes even if it is daytime. Same flashes that it emits during the day when the battery is below the optimal charge level.

## MAIN FEATURES

Marine lantern 120SECIII have been designed following the latest IALA recommendations taking care to be a product with the least possible environmental impact .

It is a self-powered compact lantern with the possibility of replacement and/or reparation in the event of malfunctioning of one or more lantern's components.



- AGM battery 6Vdc power supply.
- Low-consumption and efficient electronics.
- Integrated sunswitch c/w active photodiode.
- Three solar panel 1W fitted in the inner structure for the re-charge of the battery. Max. charge 100mA/h at full sun.
- 360° Side-emitting LED colour white, red, green, amber.
- Flash control by inner-programmed microprocessor.
- Incorporated NFC antenna to transmit communications through Android smartphones; NFC provides power-supply to the internal electronics. For safety reasons it is necessary a physical closeness between smartphone and lantern to modify the features of the flash.
- Multiple possibility to create new types of flashes.  
64 pre-set flash characteristics which can be chosen through Android application. Possibility to read the memory and internal settings of the lantern without necessarily switch-on the flasher;
- External magnet with a physical separation of the battery through ampoule for lantern stock safety.
- Standby electronic consumption 9 mA/h.
- Consumption 120 Mah.
- Application of a surface resin onto the electronic card to protect it from humidity.

**MAIN TECHNICAL FEATURES**

<b>Peak intensity (candela)</b>			
<b>21</b>	23	<b>15</b>	<b>31</b>
NOMINAL RANGE 3 NAUTICAL MILES			
<b>Main characteristics</b>			
<b>Lens</b>	120 mm	<b>Material</b>	UV resistant polycarbonate
<b>Battery</b>			4.5 Ah Agm 1or 2
<b>Switch-off consumption</b>			0 mA
<b>Standby consumption</b>			9 mA
<b>Switch-on consumption</b>			120 mA
<b>Light source</b>		High efficient LED	
<b>Solar panel</b>			3 x 0.45 Amp
<b>Weight</b>			2.5 kg approx
<b>Protection grade</b>			IP68

The colour data and the lantern range have been tested by an external laboratory according to IALA E-200 recommendations.

Here the test report N. of each test type done :

425648    RED COLOUR  
 425649    GREEN COLOUR  
 425650    AMBER COLOUR  
 425651    WHITE COLOUR

Moreover also the protection grade IP have been tested with test report N. :

425416    PROTECTION GRADE IP68

## START-UP

- On the lantern base you can find a small magnet which act as lantern battery switch on.



- With the use of a cross screwdriver, unscrew the screw and remove the magnet.

Attention: Please keep the magnet for future operations and/or for storage.



- One green small light in the internal part of the lantern will confirm you the correct switch-on of the system. At the same time you shall note a “testing” flash of the lantern.



- The lantern is correctly operative.

Verify the functioning by placing the lantern in a dark room. After few seconds the light shall start to flash with the flash characteristic requested.

# “GREEN DEAL”

## PACKING

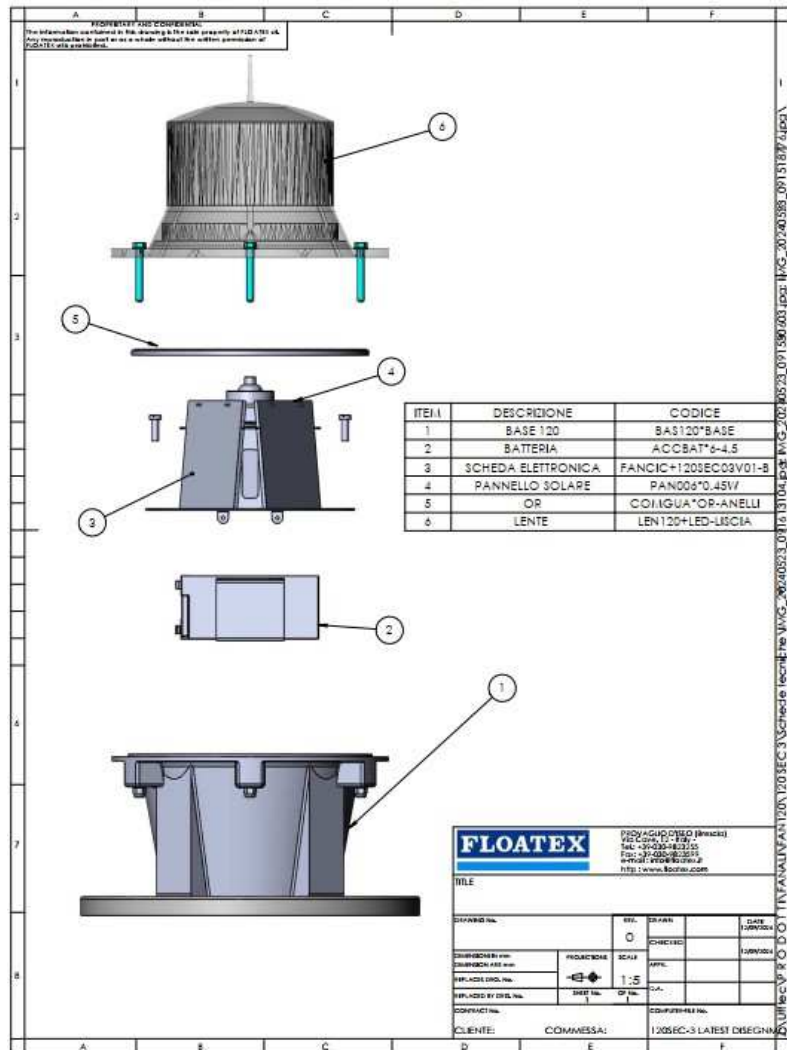
Floatex designed this lantern to minimize as much as possible the environmental impact.

The lantern packaging is made entirely of recyclable and recycled paper.

## REPAIRABILITY

The lantern is repairable in all its components.

Below is an exploded view with the codes of the parts fitted inside the lantern which can also be purchased as spare parts.



25050 Provaglio d'Iseo  
Tel. ++39 030 9823255  
<http://www.floatex.com>  
e-mail: [info@floatex.com](mailto:info@floatex.com)