

## LED60 -ML MARINE LANTERN

FLOATEX has designed the Marine Lantern for short light signalling requirements and occasional respectively provisional applications.

It has specifically been designed for application on buoys and pontoons in inland waterways, estuaries, harbours or for use on small buoys in open sea conditions.

Its reduced size allows easy installation on any structure, and the comparatively low cost makes it the very equipment for secondary lighting for emergency purposes.

It is extremely sturdy due to the use of high-grade material, ABS for the base and acrylic for lensing, and offers a perfect water tightness due to the gasket fitting.

The feeding cable passage can be positioned either under the lantern base or side.

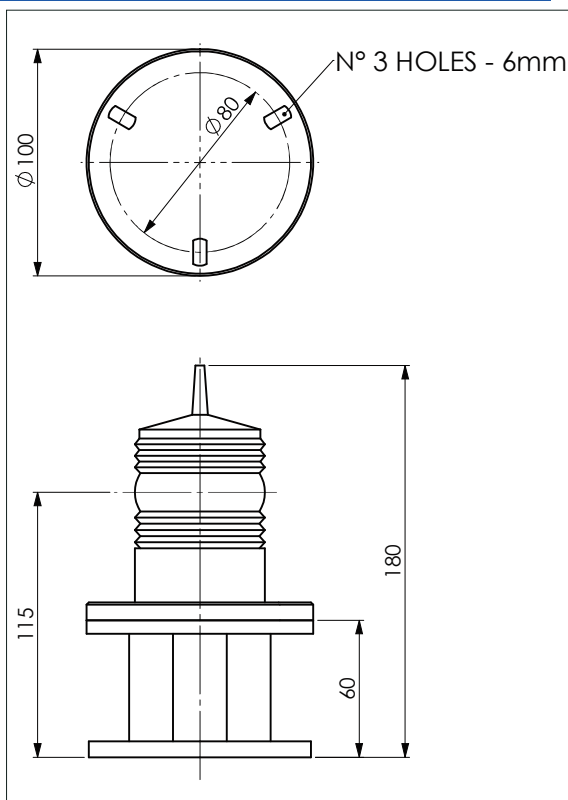
The sun switch is mounted on the lampholder cup, ensuring lighting only during the night time.

The solid structure as a whole and easy lens interchangeability make ES60 a many-sided signalling assembly which is easy to install.



ES60 MARINE LANTERN

## LED60-ML MARINE LANTERN



### TECHNICAL DATA

|             |  |
|-------------|--|
| LENS        | 60 mm fresnel lens at 360°   |
| LED COLOURS | White, red, green, amber,<br>(IALA specifications)                   |
| LEDs TYPE   | star side model<br>Verticla divergence>12°@50%<br>Life 100.000 hours |
| FLASHER     | FBL-016 adjustable characteristic set by<br>bridge pin               |
| VOLTAGE     | 6 V  |
| MATERIALS   | Lens: acrylic<br>Base: ABS<br>Fixing bolts: stainless steel          |
| RANGE       | From 3.8 to 4.5 nautical mle depending<br>on pulse setting           |

### LEDs

### CANDELAS

|      |    |
|------|----|
| BL-G | 36 |
| BL-R | 38 |
| BL-Y | 37 |
| BL-W | 29 |