



## LED155-BL MARINE LANTERN

LED155-BL Marine Lantern system has been designed for the applications where a very small signalling system is required.

The system is formed by lantern model FLOATEX 155 with clear acrylic cover and reinforced nylon base, fixed together with hinged and locking hubs.

The internal electrical light system is composed by a programmable flasher, sunswitch and ultra bright emitters diode.

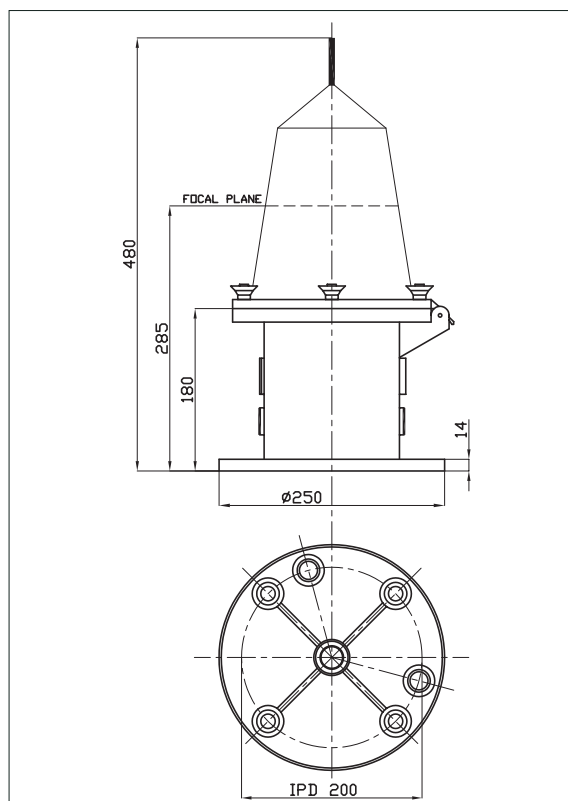
The led marine lantern signalling system can be applied on pole, docks or small boats or can be modified for other applications.



LED155-BL MARINE LANTERN



## LED155-BL MARINE LANTERN



### TECHNICAL DATA

LEDs COLOUR	White - Red - Green - Amber [yellow] IALA specifications
LEDs TYPE	Star side model Vertical divergence > 12" @ 50% Life 100.000 hours
FLASHER	FBL-032 or FLCG-256 electronic state flasher with selectable characteristic
MATERIALS	Lens: acrylic Base: nylon reinforced Fixing bolts: stainless steel

### LEDs

### CANDELAS

BL-G	204
BL-R	212
BL-Y	208
EL-W	155